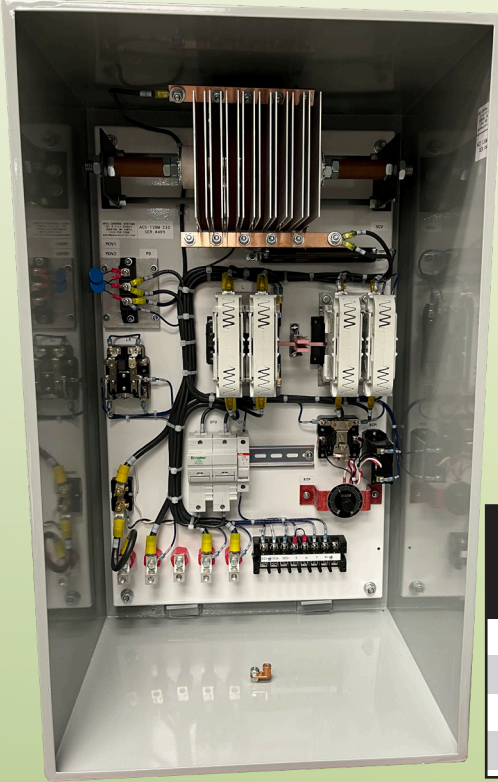




APEX YARD DOG MAGNET CONTROLLER



Apex Control Systems, Inc.

- User friendly controller for scrap magnet systems
- Varistor Discharge, less voltage spiking than resistive units
 - Saves contact tips
 - Extends magnet life
- Mechanical & electrical interlocks prevents lift/drop cycle conflict
- Adjustable dribble setting releases scrap to suit operator needs
- Low voltage control circuits available
- NEMA 3R steel enclosure

! Avoids the aggravation of solid state controllers
You know it works when you see it work

MODEL	Max Cold Amp (Amp Range)	Magnet Voltage (VDC)	Control Circuit Voltage (VDC)	Enclosure Size WxHxD (in)	Weight (lb)
APE-ACS-50M	5-50	230	12, 24, 115, 230	25x16x13	85
APE-ACS-100M	15-100	230	12, 24, 115, 230	19x35x15	150
APE-ACS-130M	15-130	230	12, 24, 115, 230	19x35x15	150
APE-ACS-175M	15-175	230	12, 24, 115, 230	19x35x15	150



Available options:

1. Overload fuse kit protects generator from damage due to grounded magnet cable. Kit includes fuse block and fuses installed in Apex Yard Dog controller enclosure.



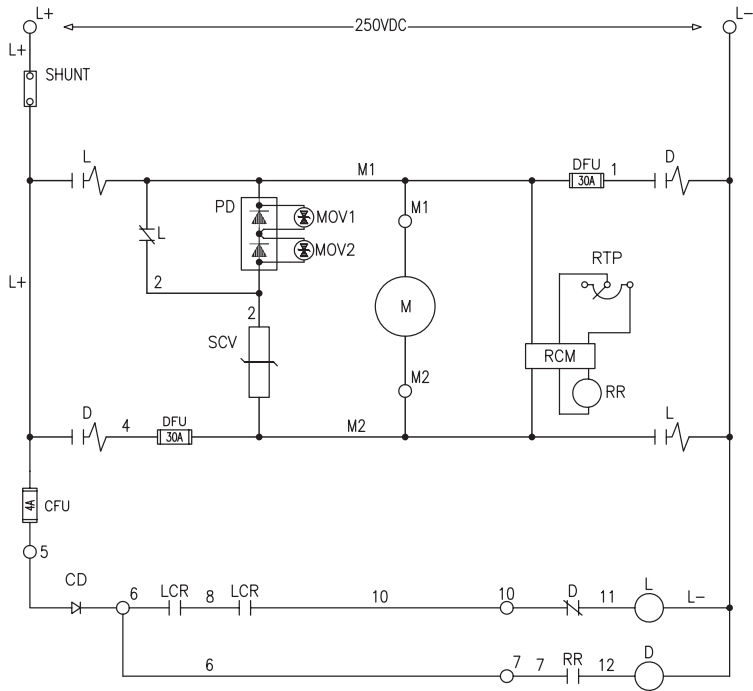
2. Slide bar resistor kit to set generator output at 230VDC. Kit includes slide bar resistors, mounting brackets and wiring installed in Apex Yard Dog controller enclosure.



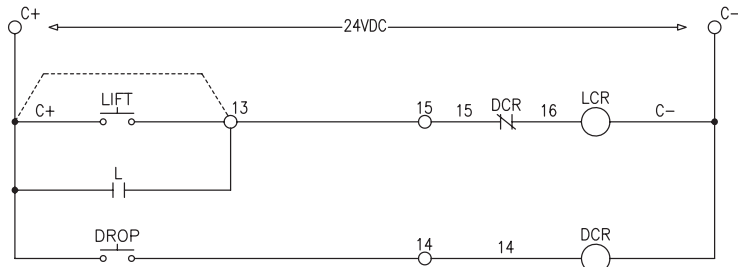
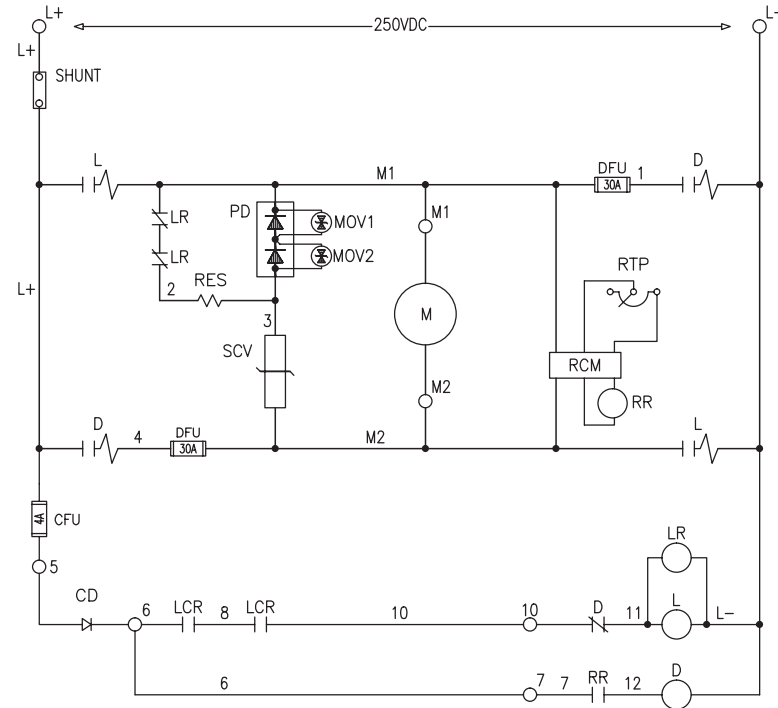
800.321.3396
nascoop.com



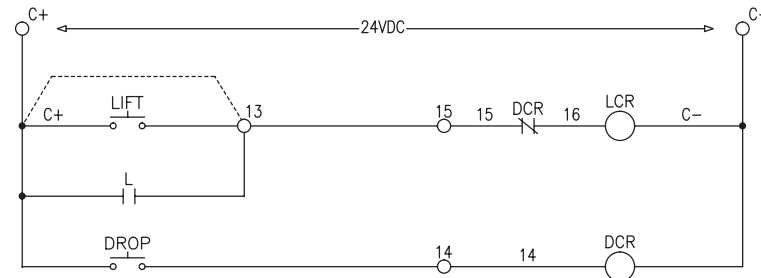
APE-ACS-50M



APE-ACS-100M thru 175M



Low Voltage Control Circuit



Low Voltage Control Circuit

CFU	Control Fuse	MOV	Surge Suppressor
CD	Control Diode	PD	Power Diode
D	2 Pole Drop Contactor	RES	Resistor
DCR	Drop Control Relay	RCM	Reverse Circuit Module
DFU	Drop Fuse	RR	Reverse Relay
L	2 Pole Lift Contactor	RTP	Reverse Timing Potentiometer
LCR	Lift Control Relay	SCV	Silicone Carbide Varistor
LR	Lifting Relay		



800.321.3396
nascoop.com