

KAJ HYDRAULIC ALLIGATOR SHEARS

THE WIDEST SELECTION OF MACHINES FOR THE TOUGHEST JOBS



KAJ200

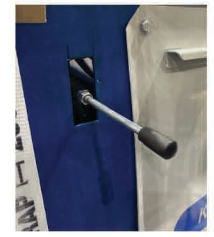


KAJ450L

CUTTING FORCES UP TO 350 TONS
BLADE LENGTHS UP TO 40" / 1000mm
CAST STEEL HEAD FOR EXTRA STRENGTH & LONGEVITY



Optional conveyors



Optional manual lever control

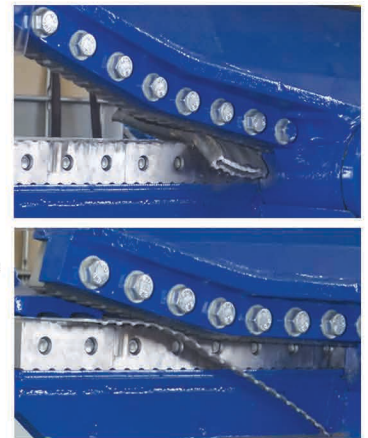
KEY FEATURES:

- Automatic hydraulic hold-down device (on most models)
- Unique cutting systems: cylinder is housed in base connected to powerful lever
- Adjustable jaw opening and tremendous cutting forces with low profile
- All machines supplied with standard or custom guarding



KAJ600B

Standard on KAJ600A and B
Unique cutting "head" with a curved portion extending out towards the tip. This gives increased cutting force farther out from the throat than a standard straight shear head.



MODEL	K200A	K450L	K600A	K600B
Blade Length (mm / in)	200 / 8	450 / 18	600 / 24	600 / 24
Tip to tip opening (mm / in)	130 / 5	260 / 10.25	340 / 14	410 / 16
Max cutting force in throat (Tons)	15	50	95	190
Cutting capacity	FE ● FE ■	Ø 18mm – 11/16" 10x55 - 0.4 x 2"	Ø 50mm – 2" 35 – 1.75"	Ø 70 – 2.75" 50 - 2"
Hold Down	Powered Hydraulic	Powered Hydraulic	Powered Hydraulic	Powered Hydraulic
Cutting activation	Mechanical / Electric	Electric	Mechanical / Electric	Mechanical / Electric
Cycles per minute (1/min)	14	12-19	12-19	10
Power (HP) (three phase)	3HP (230/460V)	7.5HP (230/460V)	7.5HP (230/460V)	15HP (230/460V)
Floor space (in)	32/32/44	24/32/60	24/35/63	38/87/60
Weight (Kg / Lbs)	180 / 400	650 / 1,430	870 / 1,850	1,450 / 3,190

KAJ 800 / 1000

Designed for the toughest scrap applications
Stainless, titanium, and hard to cut alloys

Max Cutting Profile of Mild Steel



- Up to 350 Tons cutting force
- Blade lengths to 1000 mm / 41"
- Automatic hydraulic hold down
- Adjustable jaw opening
- One piece cast steel head
- Optional feeding tables w/ length control
- Optional blade configurations, cooling, heating and greasing
- Optional pipe block
- Fully guarded
- Designed for all ferrous & stainless applications including high temp. alloys plus tungsten, titanium and chromium (depending on size)

Sheet thickness	Max Cutting Length
15mm 0.6"	440mm 17"
20mm 0.75"	350mm 14"
30mm 1"	270mm 11"
40mm 1.5"	220mm 9"
55mm 2"	160mm 6"



MODEL	KAJ800	KAJ1000
Blade Length (mm / in)	800 / 31.5	1050 / 41
Tip to tip opening (mm / in)	470 / 18.5	580 / 23
Max cutting force in throat (Tons)	350	350
Cutting capacity	FE ● FE ■	∅ 90mm - 3.5" 80mm - 3"
Hold Down	Powered Hydraulic	
Cutting activation	Electric	
Cycles per minute (1/min)	5	
Power (HP) (three phase)	11kW 15HP (230/460V)	
Floor space (in)	35/83/69	35/90/69
Weight (Kg / Lbs)	3200 / 7055	3300 / 7275

*KAJ1200 & 1600 with 700T of cutting force also available

Electric foot pedal control (solenoid activated)
Optional 2 hand push button pedestal



Optional tilting systems



Optional extended hold-down



Optional heavy-duty conveyors



800.321.3396
nascoop.com