



# CABLE CONNECTORS

## Positive Lock-Tight Action



800.321.3396

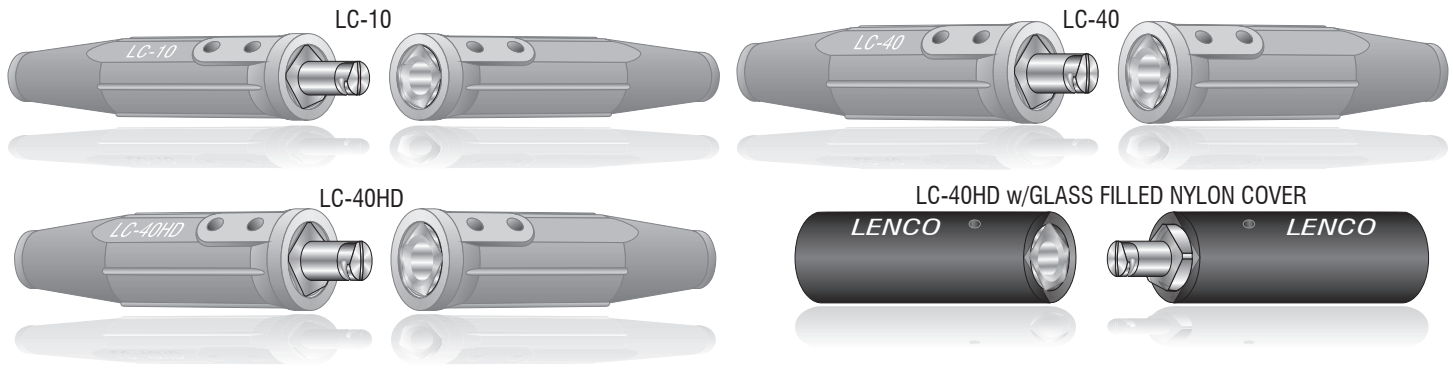
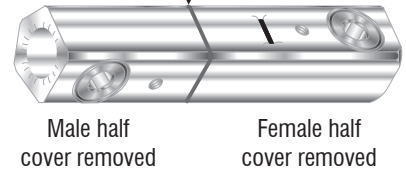
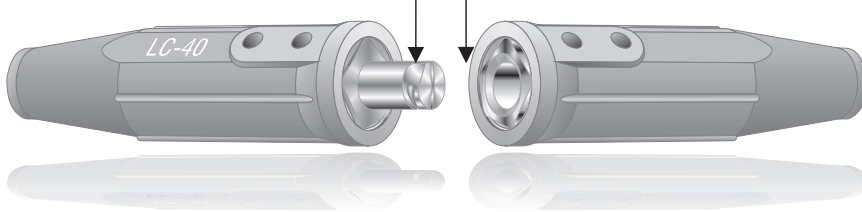
www.nascoop.com

The advanced design of LENCO cable connectors offers many advantages over older styles. Metal parts are precision machined from heavy, specially shaped brass extrusion. Cam action design of male half connector pulls the two halves tightly together. Connector covers are molded from a special heat and cold resistant material. Covers have no metal liner to rust or corrode. Easily installed with a 1/4" (6.35mm) allen wrench.

Cam-type action here makes positive stop & lock

Female brass connector is recessed to minimize accidental shorting.

Face-to-face contact for maximum conductivity

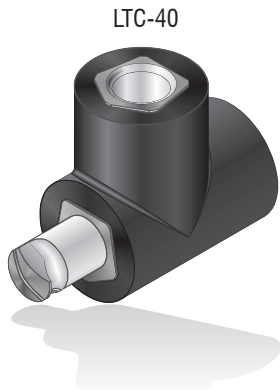


The glass filled nylon covers are designed for extreme heat and impact resistance applications.

**COVERS ARE AVAILABLE IN BLACK, RED, YELLOW, PINK, BLUE, GREEN, AND ORANGE**

Colored covers make it easy to locate the connectors for field use. Also identify cable leads easily for contractors and field erectors.

**Optional** - Connector covers may be private branded.



### SPECIFICATIONS

Model	Cable Connection	Amp Capacity	Cable Capacity	Standard Pack
LC-10	Single Oval-Point Screw	250	No. 4 thru No. 1/0 (25-50mm <sup>2</sup> )	One
LC-40	Single Oval-Point Screw	350	No. 1/0 thru No. 2/0 (50-70mm <sup>2</sup> )	One
LC-40HD	Double Oval-Point Screw	500	No. 3/0 thru No. 4/0 (70-95mm <sup>2</sup> )	One
LC-40HD w/Glass Filled Nylon Cover	Double Oval-Point Screw	500	No. 3/0 thru No. 4/0 (70-95mm <sup>2</sup> )	One

### SPECIFICATIONS

Model	Description	Item Code No.							Weight
		Black	Red	Yellow	Pink	Blue	Green	Orange	
LC-10	Complete Unit	05040	05041	05042	---	---	---	---	9 oz. (255g)
	Male Half	05043	05044	05045	---	---	---	---	4 oz. (115g)
	Female Half	05046	05047	05048	---	---	---	---	5 oz. (140g)
	M Bulk Unassembled F Bulk Unassembled	0504301 0504601							
LC-40	Complete Unit	05050	05051	05052	05550	05551	05552	05553	14 oz. (400g)
	Male Half	05053	05054	05055	05555	05556	05557	05558	7 oz. (198g)
	Female Half	05056	05057	05058	05560	05561	05562	05563	7 oz. (198g)
	M Bulk Unassembled F Bulk Unassembled	0505301 0505601							
LC-40HD	Complete Unit	05060	05061	05062	05800	05801	05802	05803	15 oz. (425g)
	Male Half	05063	05064	05065	05810	05811	05812	05813	7 oz. (198g)
	Female Half	05066	05067	05068	05820	05821	05822	05823	8 oz. (225g)
	M Bulk Unassembled F Bulk Unassembled	0506301 0506601							
LC-40HD w/Glass Filled Nylon Cover	Complete Unit	05170	---	---	---	---	---	---	13 oz. (369g)
	Male Half	05171	---	---	---	---	---	---	6 oz. (170g)
	Female Half	05175	---	---	---	---	---	---	7 oz. (198g)
LTC-40	"T" Connector	05900	05901	LC-40 Male (1); LC-40 Female (2)					11 oz. (310g)