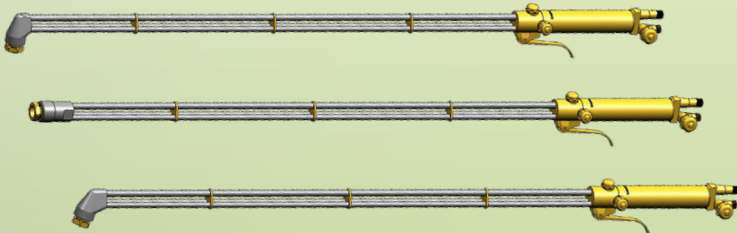




# QCC TORCHES



## CUTTING TORCHES

QCC's 4000 Series handheld cutting torches cut material up to 36" thick, flow over 4,000 CFH of oxygen and are comparable to heavy-duty torches from other torch manufacturers. 4000 Series torches feature a tip mix design where gases are mixed in the tip rather than the torch body to increase operator safety, reduce flashbacks and prevent costly damage. 4000 Series torches also feature a tri-tube design for increased rigidity and stability, bar stock rear body that is more durable than a traditional cast rear body and corrosion-resistant stainless steel heads, tubes and levers.

### FEATURES

- Recommended cutting range is up to 36"
- Choose any length from 24" to 216"
- Select a head angle of 180°, 90° or 75°

## POWDER TORCHES

Quickly and efficiently cut through stainless steel, cast iron and other difficult to cut metals with QCC's 4900 Series of powder cutting torches! Featuring a unique powder nozzle, these torches feed iron powder into the torch flame. This allows the flame to penetrate non-ferrous and ferrous metals, as well as carry through air gaps found in between stacked metals. This makes quick work of materials that would otherwise be difficult or impossible to cut.



### FEATURES

- Turns powder on & off for cutting both ferrous & non-ferrous metals
- Balanced & lightweight design for comfort, speed & efficiency
- Single tube powder nozzle cuts in one direction & up to 36" deep
- Powder dispenser holds 100 pounds of iron powder which provides 8 to 16 hours of continuous cutting
- Powder dispenser is portable

### ADVANTAGES

- All-in-one system includes everything you need
- Perfect for coils & plate stacks
- Effective in most weather conditions

### CUSTOMIZATION

- Available in both tip-mix & post-mix applications
- Available with 75°, 90° or 180° head configurations
- Ranging from 36" to 120" available upon request
- Optional heat shield increases operator safety



# 800.321.3396

# nascoop.com



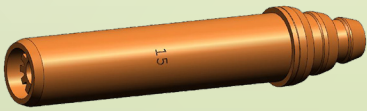


# QCC TORCHES



## HANDHELD CUTTING TIPS

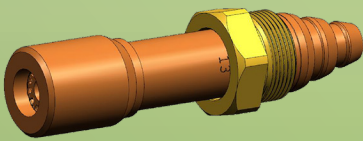
These 140 Series tips from QCC are engineered to provide heavy preheat when cutting, slitting and beveling metal that is painted, rusted or heavily scaled. 140 Series tips cut through materials from 15" to 25" thick, flow up to 5,100 CFH and feature a tip mix design. 140 Series tips mix gases in the tip, not in the torch or handle. This helps reduce flashbacks, improve operator safety, increase flow rates and prevent expensive torch damage. 140 Series tips also feature one-piece copper construction, bored internal barrels for maximum flow and precision-machined 26° V-shaped splines to increase gas flow, improve heat transfer and improve flame stability. Designed for use with QCC 4000 and 5700 Series handheld torches.



Tip Series	Tip Size	Depth of Cut	Oxygen (PSIG)	Fuel Gas (PSIG)	Oxygen Flow (CFH)	Natural Gas Flow (CFH)
140 or 240	9	15"	60-85	12-15	1,300-1,500	100-120
140 or 240	11	19"	60-85	12-15	1,700-1,950	130-160
140 or 240	12	21"	60-85	12-15	1,800-2,250	165-180
140 or 240	13	25"	60-85	15-18	2,100-2,500	175-210
140 or 240	160*	15"	90-130	12-15	2,100-2,300	100-120
140 or 240	200*	19"	90-130	12-15	3,100-3,500	130-160
140 or 240	240*	25"	90-130	12-15	4,600-5,100	165-180

\*High-speed model. Runs at higher pressure.

149 Series cutting tips from QCC are specially engineered to provide heavy preheat and maximum flow. These tips cut through material ranging from 12" to 26" thick, flow up to 4,500 CFH and feature QCC's trademark tip mix design. 149 Series tips mix gases in the tip rather than the torch or handle. This unique approach reduces flashbacks, improves operator safety, increases flow rates and prevents costly torch damage. 149 Series tips also feature one-piece copper construction with a brass tip nut, bored internal barrels to maximize flow capacity and precision-machined U-shaped spines to increase durability, improve heat transfer and improve flame stability. For use with QCC 4000 and 5700 Series handheld torches.



Tip Series	Tip Size	Depth of Cut	Oxygen (PSIG)	Fuel Gas (PSIG)	Oxygen Flow (CFH)	Natural Gas Flow (CFH)
136/149	11	12"-19"	60-80	8-15	1,500-2,900	130-350
136/149	13	19"-28"	60-80	10-15	2,100-4,000	150-400
136/149	15	28"-36"	80-100	15-20	2,500-4,500	180-450



**800.321.3396**  
**nascoop.com**

