

Roll Off & Hooklift Tarp Systems:

Roll·Rite® DC Series

for Solid Waste &
Recycling Industries



Automated Covering Systems



www.Nascoop.com

Roll·Rite

The Super Duty Motor:

Designed for bigger trucks, our patented Super Duty is the tarp industry's leading gear motor. Our TarpMaster® with 3-year warranty is standard on DC200 Series systems.

- **Engineered...** for high torque tarping demands
- **Unique Performance...** Unlike competitive tarp motors, the Super Duty can reach peak performance because it requires only **half the amp draw** of any other tarp motor
- **High-Polished...** Chrome-plated casing, designed for virtually corrosion-proof protection, adds a distinctive profile to your truck for a professional appearance
- **5-year Warranty...** Industry's only non-prorated warranty against premature wearout. The Super Duty gear motor is warranted for a period of 5-years

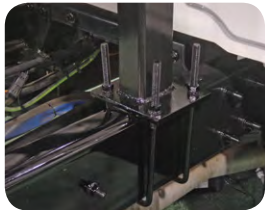
The Tower, Integrated Housing & Tarp Spool

- **Ships Completely Pre-Assembled...** with pre-installed, pre-wired and pre-tested Integrated Housing and Super Duty Gear Motor, Power Pack Unit and Black Box™ Wireless Controls
- **Standard Equipment...** includes Work Lights and Coil Cord
- **Pre-wired...** fast "install-ready" hookup in under 10 hours
- **New Bolt-on Mountings...** Power Pack and Black Box mountings are bolted on for installs needing more flexibility
- **Durable Finish...** Black powder-coated finish on tower provides added durability and corrosion resistance
- **Easiest to Install...** with 12-inches of clearance behind cab
- **Tower Mounting Brackets...** are available in either U-Bolt or Side Frame style, call for details.

The Wireless Controls:

Systems with adjustable features come standard with our Black Box™ wireless controls with keyfob remotes:

- **New Buttons...** Sealed membrane push button operation
New work light button with remote control access
- **Meets...** SAE International Standard for Heavy Duty Vehicle Applications (SAE# J1455).
- **"Install-Ready" ...** pre-wired, improved external connections for fast hookup
- **Automatic Timed Lockout...** No Key lockout needed. Press Ch1 and Ch2 buttons or keyfob to unlock or re-lock
- **360° Walk-Around...** "Since you can't tarp what you can't see, our remote operation allows more control over tarp functions to help avoid load obstructions... so you can clearly see what you are covering



**Tower
Worklights**
STANDARD
(Optional on DC200)

®

DC Series

The Arms:

Roll-Rite® tarp arms consist of a lower pivot arm and upper tarp bow. Each are made from a specially treated, high strength extruded aluminum alloy.

- **Strongest Arms...** Patented arm design delivers the lightest, most durable tarp arm with maximum strength to weight ratio.
- **Telescopic Fit...** Allows for easy installation and widest range of system variations with the least amount of required part numbers.
- **High Polished...** Each arm is buffed and polished to a mirror-like finish
- **45° Pivot Offset Option...** strongest offset available effectively positions base pivot arm parallel to hoist frame, reducing load interference

Roll-Rite®
Pivot Arm

Roll-Rite®
Tarp Bow

45° Pivot
Offset
Option



The Pivot Mounts:



- **External: DC200 / DC203 / DC204...** stationary spiral torsion spring pivots are ideal for single axle rolloff and hooklifts. Optional mounting brackets (PN 45170) are available

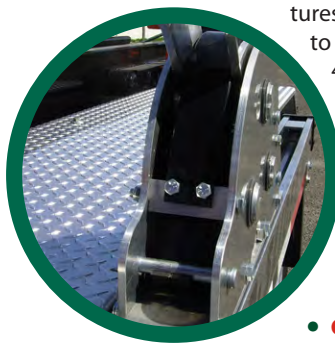
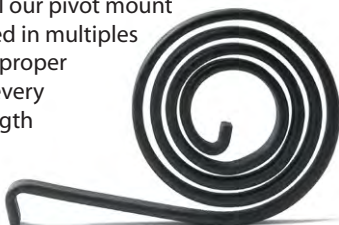


- **Top Mount: DC400...** stationary greasable roller bearing top mount pivots are an economical solution for roll off and hooklifts hauling similar size containers



- **DC350 Sliding Pivot...** Innovative gear-driven spring pivot (pat. 8,465,080) combined with our patented sliding mechanism (pat. 6,257,646; 6,659,531) offers:

- **The Spiral Torsion Spring...** our heat treated, teflon coated springs, featured in all our pivot mount styles, are used in multiples of 4 to 16 for proper pressure on every container length



- **Versatile Range...** the DC350 sliding pivot features 180° arm rotation and allows 20 in. of travel to easily accommodate a 22 ft long 20-, 30- and 40-yd container

- **Narrow 3" Profile...** design meets DOT requirements of 108 inch outside width and 103.5 inch inside width while providing proper spring pressure. Profile width is equivalent to a 2-spring package but has power equivalent to an 8" wide package.

- **Greater Overall Clearance...** nothing on top of or between fender and container to interfere with container loading.

The Tarps:

Leading design and durability in truck tarps. It starts with premium fabrics and ends with detailed fabrication. With state-of-the-art fabrication techniques Roll-Rite delivers the most durable tarps with a longer life-cycle.

- **Single Piece Construction**
- **Reinforced Corners and Seams (Double-Stitched or Welded)**
- **Rear Tarp Rod Pocket Completely Lined And Reinforced With Grommets**
- **Edges Bound to Add Strength and Provide a Finished Appearance**



The Pleated Tarp Design: You can have the benefits of both a straight tarp and a flapped tarp with none of the hassles. With two pleated folds along the length, the tarp can expand up to 10' wide to function like flaps. Pleated Tarps are a custom order. The Pleated Tarp lets you:

- **Eliminate shock cords**
- **Forget the seams**
- **Stop straining to reach the center of a flapped tarp**

Super Tough Mesh



Our heavyweight Super Tough covers challenging debris in scrap, recycling and solid waste.

Get 3 to 5 Times Wear Life! — Users experience 3x-5x the wear life over other scrap/refuse tarps.

- Premium 16 oz Heavy Weight Woven Mesh made of 7,500 denier strands of UV resistant polypropylene
- 7x7 weave breathes enough to minimize flapping
- UV protected strands
- Heavy duty 2" binder and seat-belt webbing front & rear to prevent fraying and tearing

| Super Tough Mesh 96" Wide | |
|------------------------------|-------------|
| Part# | Length (ft) |
| 86202 | 20 |
| 86222 | 22 |
| 86242 | 24 |
| 86262 | 26 |
| 86282 | 28 |
| 86302 | 30 |

| Custom Super Tough (per ft) | |
|--------------------------------|------------------------|
| Part# | Description |
| 86020 | up to 120" wide |
| 86040 | Pleated |
| 86050 | 12" Flaps w/Grommets |
| 86060 | 12" Flaps w/Shock-cord |

Premium Mesh



- Premium 7.7 oz. woven fabric made of two, 1,000 denier polyester twisted strands coated with UV resistant PVC
- 7.5x5 weave contains even fine particles yet breathes enough to minimize flapping
- Not broken down by sunlight like common PVC coated materials
- Edges bound to add strength and provide a finished appearance

| Premium Mesh 96" Wide | |
|--------------------------|-------------|
| Part# | Length (ft) |
| 81200 | 20 |
| 81220 | 22 |
| 81240 | 24 |
| 81260 | 26 |
| 81280 | 28 |
| 81300 | 30 |

| Custom Premium Mesh (per ft) | |
|---------------------------------|------------------------|
| Part# | Description |
| 81020 | up to 120" wide |
| 81040 | Pleated |
| 81050 | 12" Flaps w/Grommets |
| 81060 | 12" Flaps w/Shock-cord |

DC Series

DC200™

- For Single Axle Trucks with Same Size Containers Using up to 24 feet of Tarp...
External Pivot Set. TarpMaster® 98" Tarp Spool with Integrated Housing, Stationary Powder-coated Tower, Single Function RF Controller, 1 Keyfob, Wide Tarp Bow Set
Estimated System Weight: Under 500lbs
Options: Worklights, Pivot Mount Brackets



DC203™

- For Single Axle Trucks with Similar Size Containers Using up to 24 feet of Tarp...
External Pivot Set. TarpMaster® 98" Tarp Spool with Integrated Housing, Worklights, Adjustable Powder-coated Tower, Single Valve Hydraulic Pump w/Black Box™ Remote Controls, 2 Keyfobs, Wide Tarp Bow Set
Estimated System Weight: 550lbs
Options: Pivot Mount Brackets



DC204™

- For Pickup Chassies with Similar Size Containers Using up to 24 feet of Tarp...
External Pivot Set. TarpMaster® 98" Tarp Spool with Integrated Housing, Worklights, Adjustable Powder-coated 'LOW' Tower, Single Valve Hydraulic Pump w/Black Box™ Remote Controls, 2 Keyfobs, Wide Tarp Bow Set
Estimated System Weight: 550lbs
Options: Pivot Mount Brackets



DC350™

- For Trucks with Varying Size Containers Using up to 30 feet of Tarp...
Patented Sliding Pivot Set. Super Duty Gear Motor with 98" Tarp Spool with Integrated Housing, Worklights, Adjustable Powder-coated Tower, Wireless Power Pack with Black Box™ Remote Control 2 Keyfobs, Wide Tarp Bow Set
Estimated System Weight: 750lbs
Option: DC352 system with 2-Stage tower adjusts from 5 feet up to 11 feet above truck frame to allow clearance for taller containers



DC400™

- For Trucks with Similar Size Containers Using up to 30 feet of Tarp...
Patented Roller-Bearing Stationary Pivot Set. Super Duty 98" Tarp Spool with Integrated Housing, Worklights, Adjustable Powder-coated Tower, Wireless Power Pack with Black Box™ Remote Control 2 Keyfobs, Wide Tarp Bow Set
Estimated System Weight: 575lbs
Option: DC402 system with 2-Stage tower adjusts from 5 feet up to 11 feet above truck frame to allow clearance for taller containers



Roll-Rite® DC-Series for Trailers

Same DC Series control and standard component features with optimized coverage for roll off trailers, pup trailers and frameless roll off applications. For special fit considerations, please call for availability of additional system variations and custom length tarps. Please refer to recommended spring capacity charts below for adequate spring pressure needed to operate your system tarp.

Adjustable DC300™ for Trailers with Varying Size Containers

- Adjustable Sliding Pivot... offers maximum adjustability to cover various container sizes from 10 to 40 cubic yards. The tapered profile tucks in above the tires and below the container rub rail, accommodates older style trailers and clears 102" containers with room to spare

Option: 2-Stage tower adjusts from 5 feet up to 11 feet above truck frame to allow clearance for taller containers



Recommended Spring Capacity for Trailers:

| Tarp Length (ft) | DC300 Adjustable Pivot |
|------------------|------------------------|
| 30 | 6-Spring |
| 32 to 42 | 8-Spring |
| 40 to 50 | 12-Spring |



Stationary DC400™ for Trailers with Similar Size Containers

- Stationary Pivot... our roller bearing fixed pivot is an effective solution for trailers that only haul similar size containers

Option: 2-Stage tower to allow clearance for taller containers



Recommended Spring Capacity for Trailers:

| Tarp Length (ft) | DC400 Stationary Pivot |
|------------------|------------------------|
| 30 | 6-Spring |
| 32 to 42 | 8-Spring |
| 42 to 46 | 12-Spring |
| 46 to 57 | 16-Spring |



Automated Covering Systems
AUTHORIZED DISTRIBUTOR:

www.Nascoop.com

