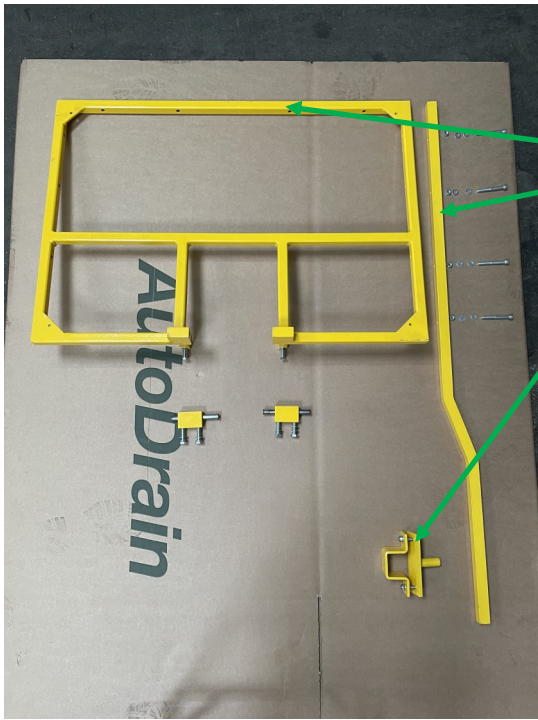


# WheelPopper Polycarbonate Guard Fitting



Polycarbonate Guard can be fitted to all variants of the WheelPopper machine

Shown here fitted to an electric variant



Guard components

Mainframe

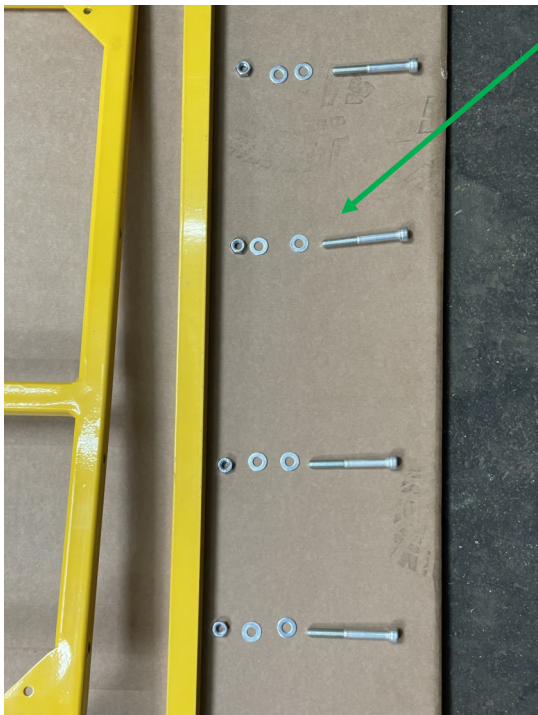
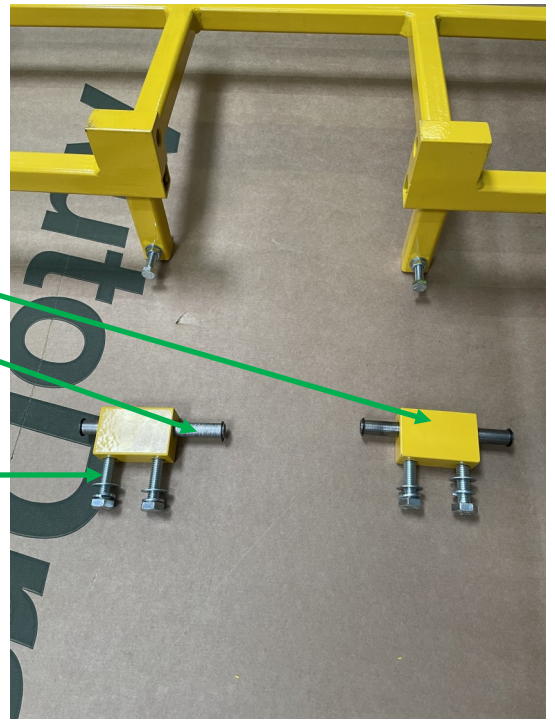
Actuating arm

Hinge blocks

Hinge pins

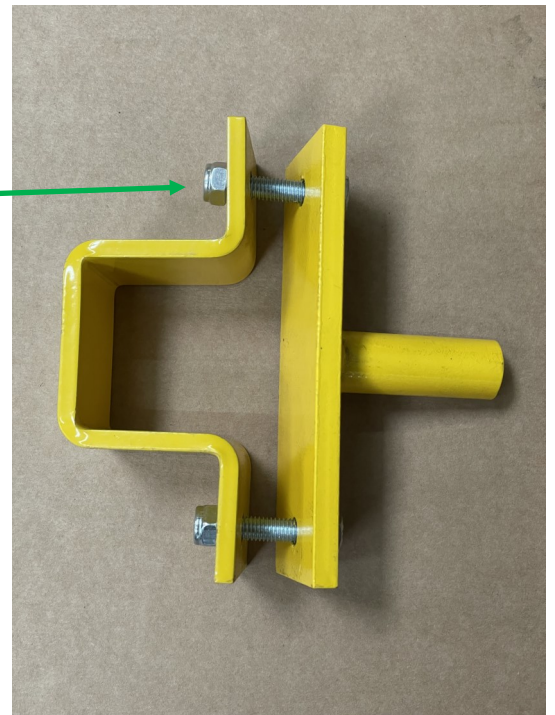
Actuating clamp

Hinge block fixings M10 x 40mm set screws, washers and spring washers



Actuating arm fixings M8 x 70mm socket caps, nuts and washers

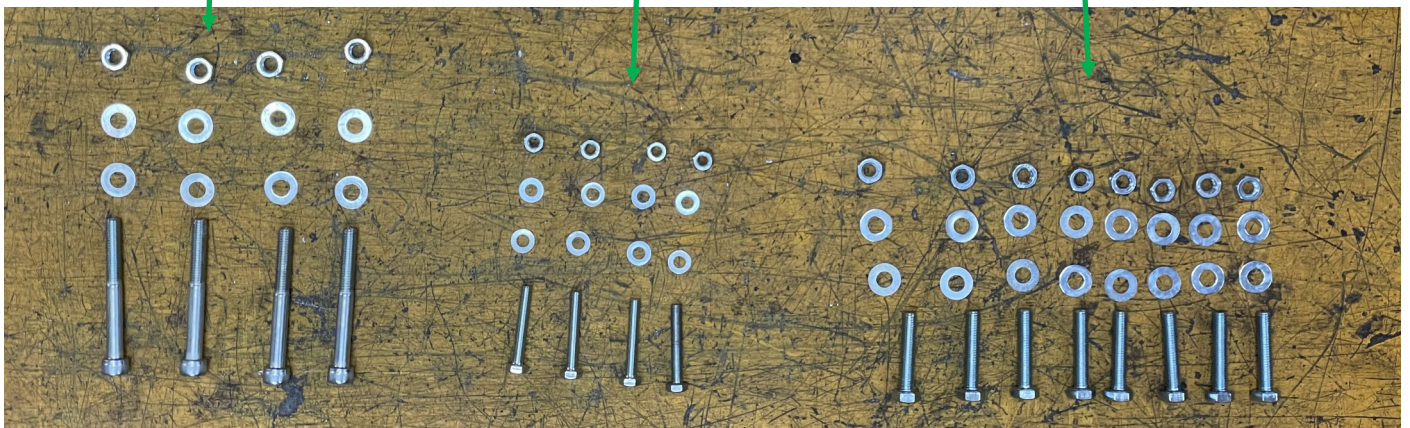
Actuating clamp fixings M8 x 40mm set crews, nylock nuts and washers

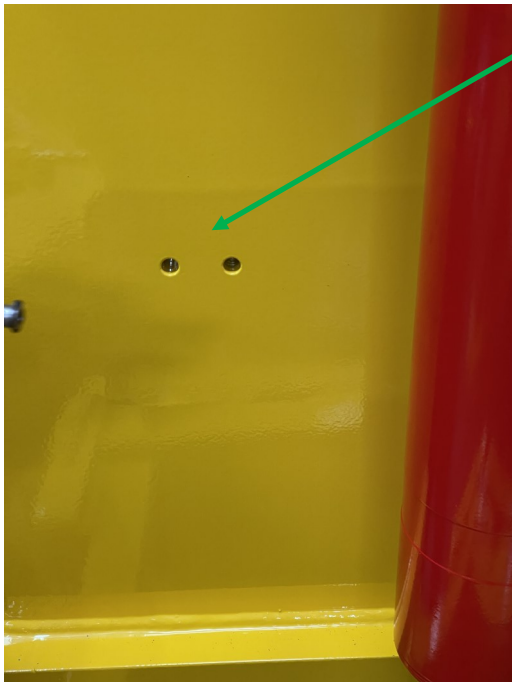


Actuating arm fixings M8 x 70mm socket caps, nuts and washers

Top polycarbonate sheet fixings M6 x 40mm set screws, nuts and washers

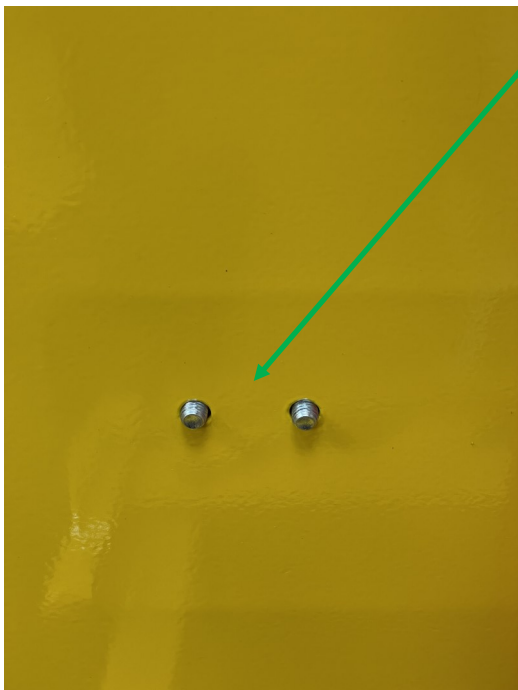
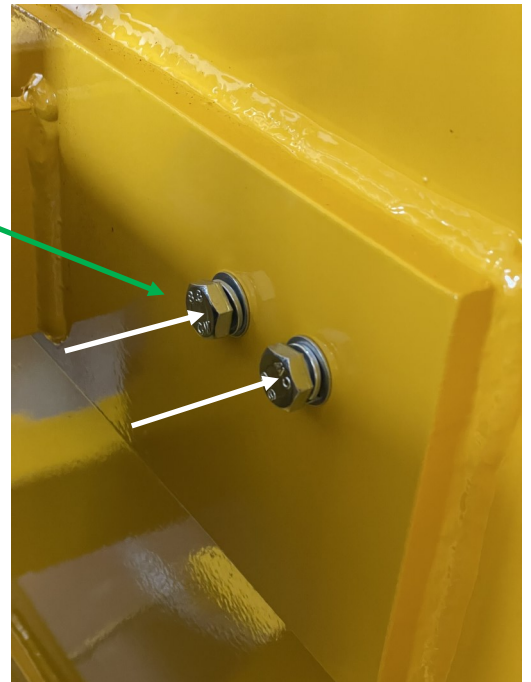
Side and front polycarbonate sheet fixings M8 x 40mm set screws, nuts and washers



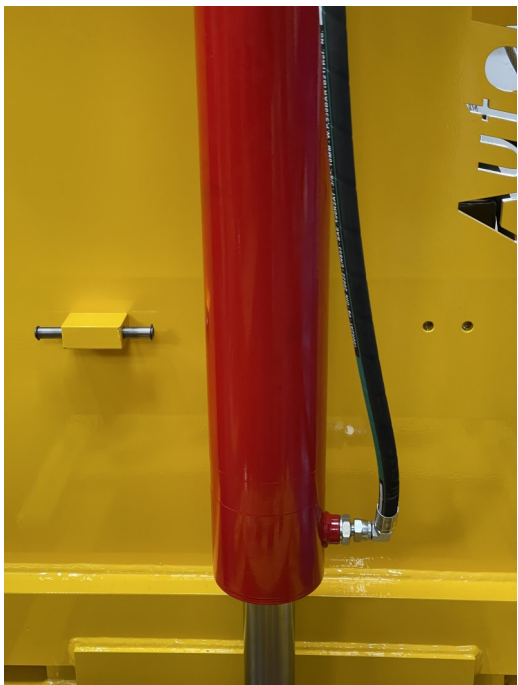
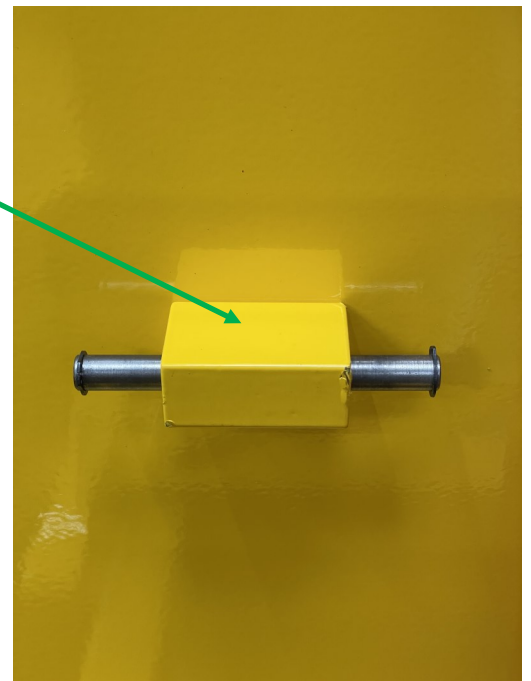


Hinge block fixing holes in clamping frame

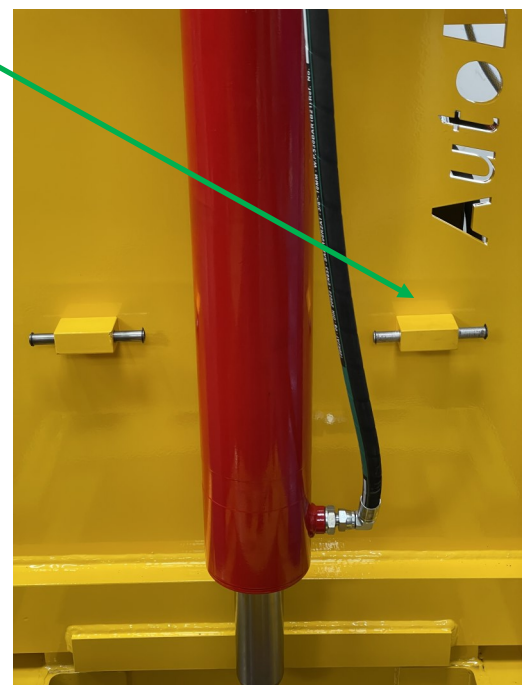
Insert set screws, washers and spring washers

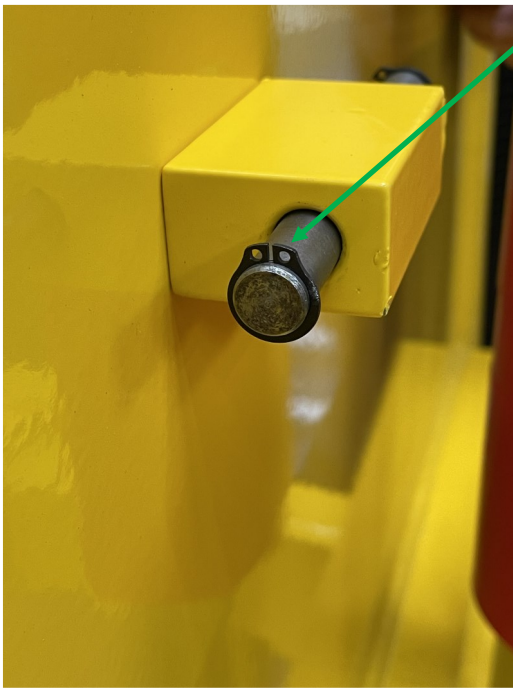


Fit left side hinge block to other side of clamping frame  
Do not fully tighten at this stage

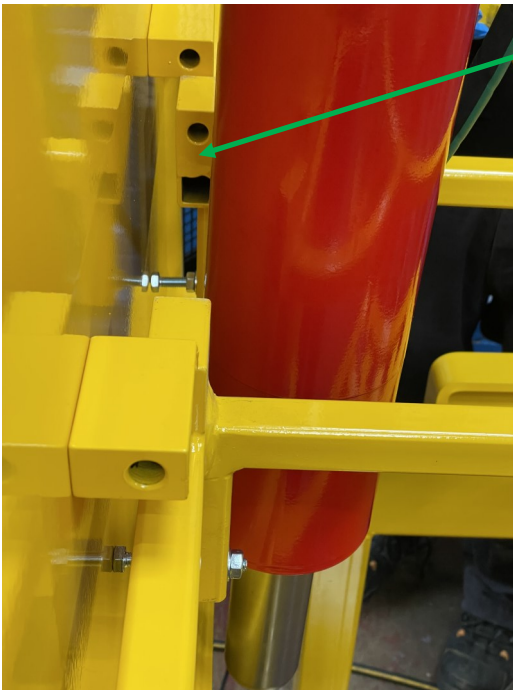
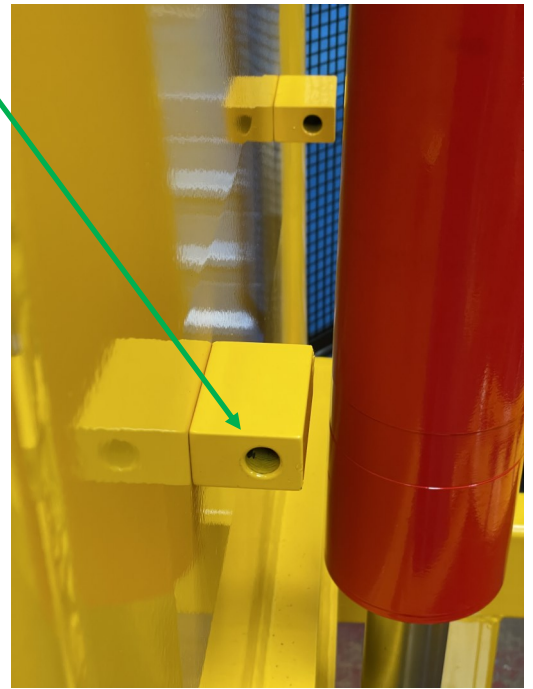


Repeat for right side hinge block



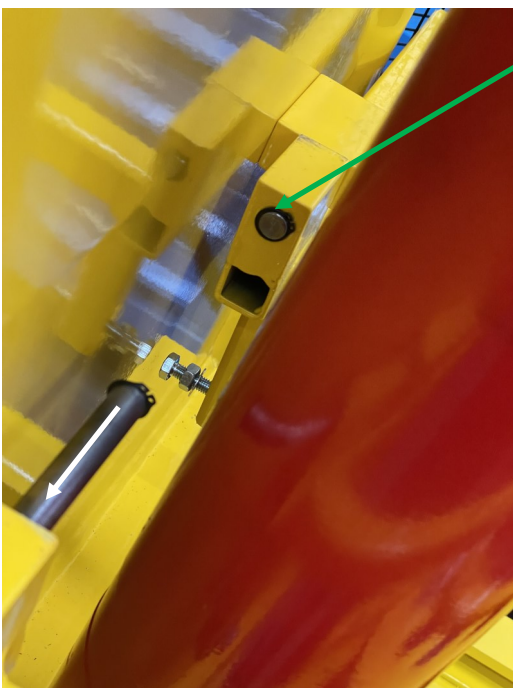
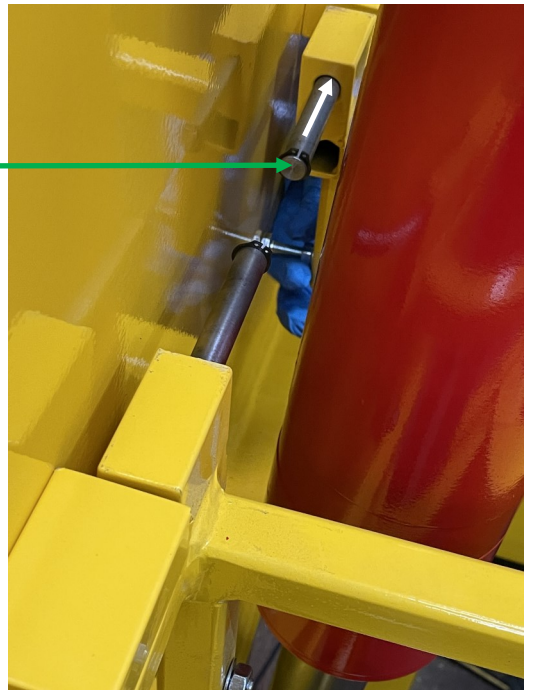


Remove circlips and hinge pins



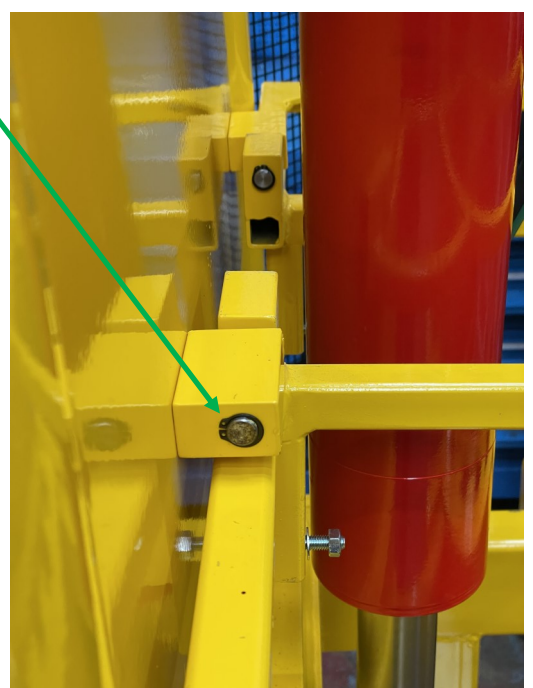
Using an assistant offer-up main frame of guard to hinge blocks

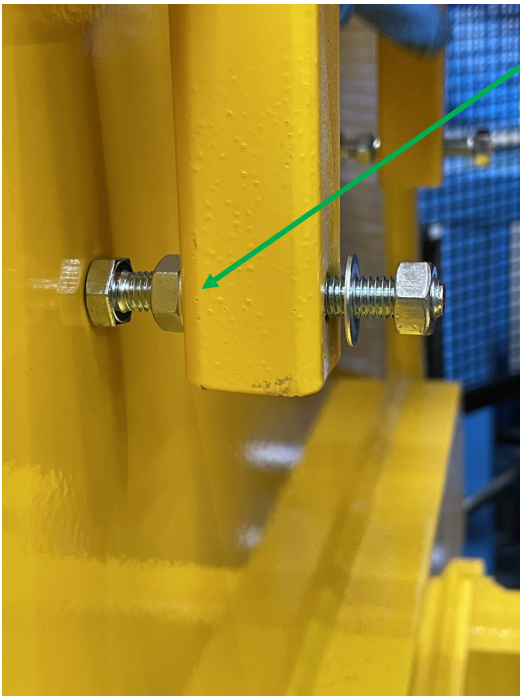
Insert hinge pins into main-frame



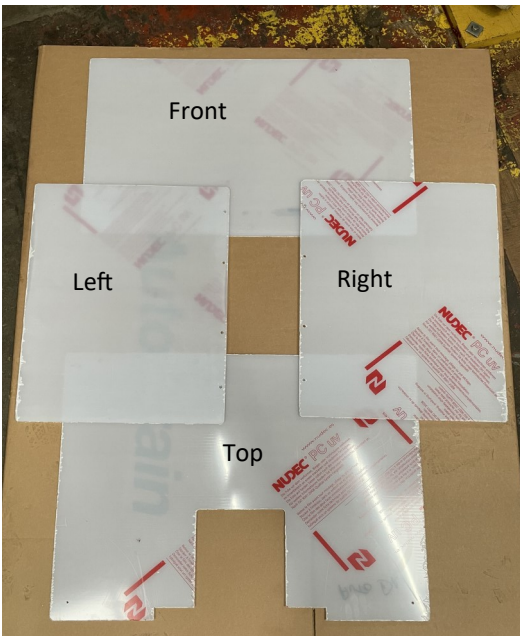
Push hinge pins into hinge blocks securing with circlips

Now fully tighten hinge block fixings on reverse side





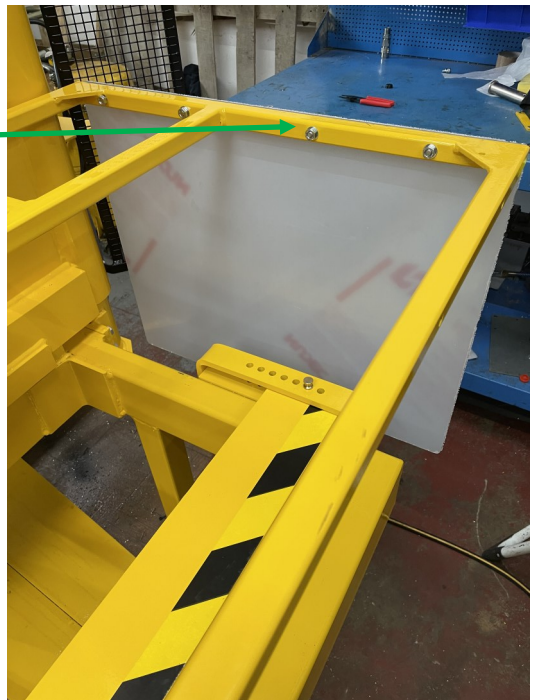
Adjust and lock these fixings to achieve a 90° angle for the guard mainframe



Polycarbonate sheets with protective film fitted

Attach right side polycarbonate sheet with fixings

NOTE take care not to over-tighten as this can crack the sheet

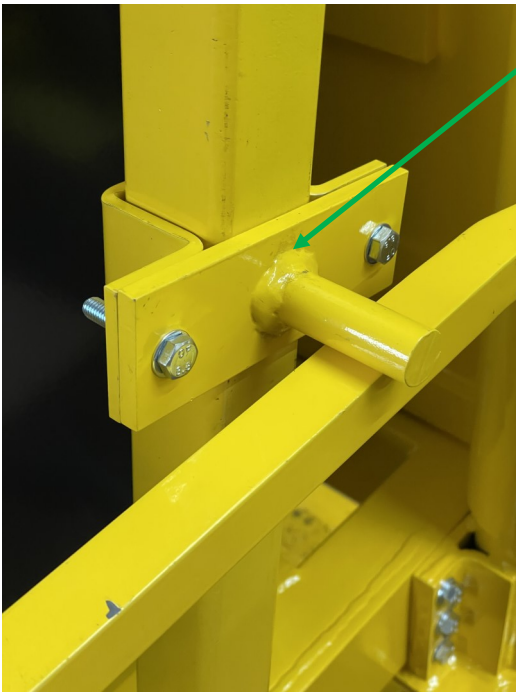


Attach front sheet

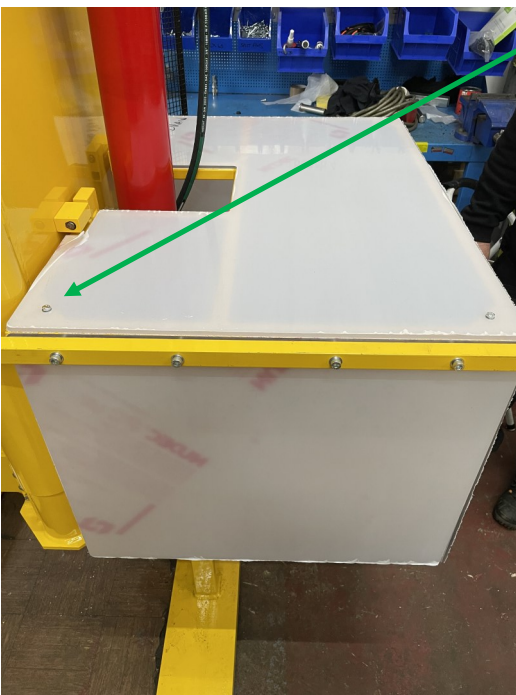
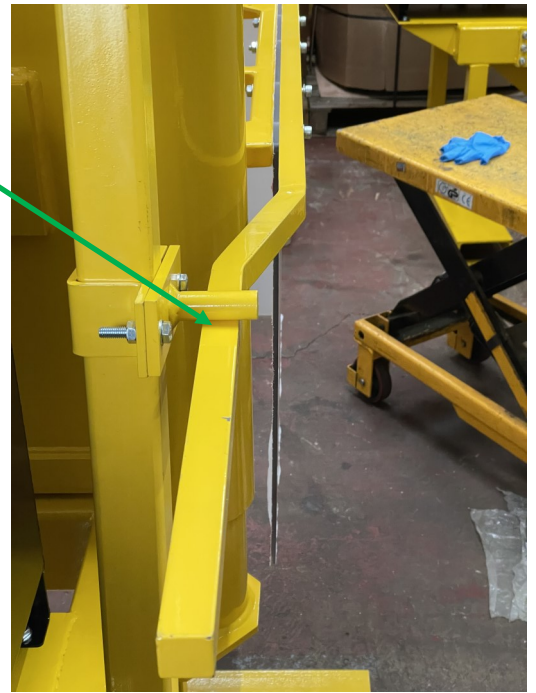
Using and assistant attach right sheet and actuating arm using the longer 70mm socket capo screws

Taking care not to over-tighten





Fit and tighten actuating clamp so that it just touches the actuating arm



Place on top sheet and insert fixings and washers

To gain access to fit nuts and washers the whole assembly must be raised on its hinges

Nuts can be tightened from the underside



Protective film can either be removed for immediate use or left in place for transport

