

Save this booklet
**PLEASE READ THIS BOOKLET BEFORE
OPERATION**

SUPERSHEAR

A CUT ABOVE THE REST



110/220 VOLT ELECTRIC SHEAR
SERIAL NUMBER _____
PURCHASE DATE _____

110/220 VOLT

- LAY THE UNIT DOWN SO THE VENT PLUG IS FACING UP AND THE HYDRAULIC TANK IS HORIZONTAL. REMOVE THE VENT
- FILL THE TANK WITH APPROXIMATELY 2 GALLONS OF A MID GRADE HYDRAULIC FLUID AW32 CAN BE PURCHASED AT “CHECKER AUTO PARTS” ATF CAN BE SUBSTITUTED IF NECESSARY ALTHOUGH NOT RECOMMENDED. BECAUSE WE TEST THE UNIT AFTER ASSEMBLY, THIS AMOUNT MAY BE LESS. OIL LEVEL SHOULD BE ABOUT 1-1.5 INCHES FROM THE TOP OF THE FILL HOLE. BE SURE WHEN TIPPING THE UNIT BACK TO THE UPRIGHT POSITION THE FLUID DOESN'T LEAK FROM THE VENT. IT MAY TAKE A TRIAL AND ERROR APPROACH TO AVOID OVERFILLING THE TANK. FLUID VOLUME WILL INCREASE WHEN IT GETS HOT SO LEAVE ROOM FOR EXPANSION.
- THE 220 UNIT IS SHIPPED WITHOUT A PLUG, WIRE A PLUG TO YOUR SHOP SPECIFICATIONS.
- MAKE SURE THE UNIT IS PLUGGED INTO A THREE PRONG “GROUNDED” OUTLET WITH NO LESS THAN A 30 AMP SERVICE, AVOID EXTENSION CORDS UNLESS THEY WILL CARRY THE 30 AMP LOAD.

OPERATION OF CUTTING HEAD

Operation of the Supershear Cutting head is both simple yet dangerous. We've designed the operation with the intent that only one worker use the head to prevent accidental injury.

After turning the shear on, lift the cutting head using the rubber two switch handle and the mainframe handle that is connected to the cylinder. The worker should always have these two components in hand to prevent accidentally injury.

Place the Mainframe over the exhaust pipe to be cut. The cutting blade should be at its lowest point to allow the Mainframe to slide easily over or under, if you are working on the ground, the exhaust pipe. Find a location that will allow the head to cut as close to a 90 degree angle to avoid twisting as the blade enters the material. With the "up" button on the switch handle, slowly engage the cutting blade into the exhaust. Once it is established that the blade will enter at the 90 degree angle or close to it proceed in cutting through the pipe by pushing the "up" button until the pipe is completely cut through.

Once the blade is complete through the pipe, push the "down" button on the switch handle. This will hydraulically remove the cutting blade from the new cut. Once the blade has retracted to its lowest position the shear head will become weighted again as it isn't resting on the cut pipe, so be alert to the weight.

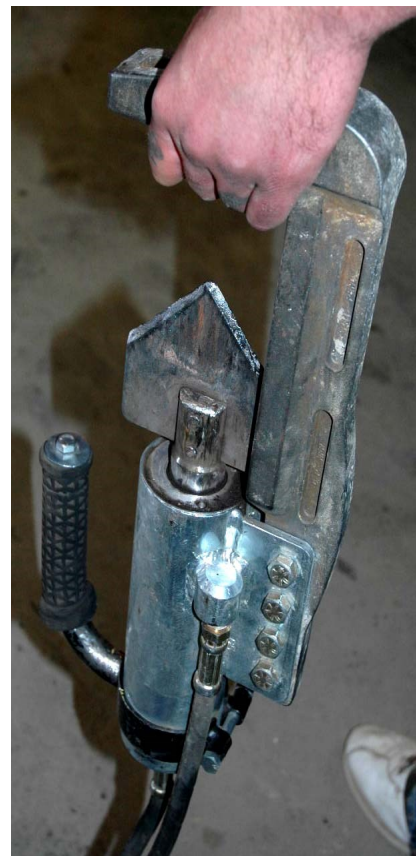
Repeat this procedure for all cuts. Always work by yourself to avoid injury

SAFETY/SEGURIDAD



**CARRY THE SHEAR HEAD BY THE
HANDLE TO AVOID INJURY**

**-LLEVE LA CABEZA DEL ESQUILEO (TIJERA) POR LOS
MANGOS PARA EVITAR LESIÓN**



**NEVER CARRY SHEAR HEAD IN THE ABOVE MANNER.
SERIOUS INJURY CAN OCCUR**

**NUNCA LLEVE LA CABEZA DEL ESQUILEO DE LA MANERA
DESCRITA. LESIÓN SERIA PUEDE OCURRIR**

SAFETY

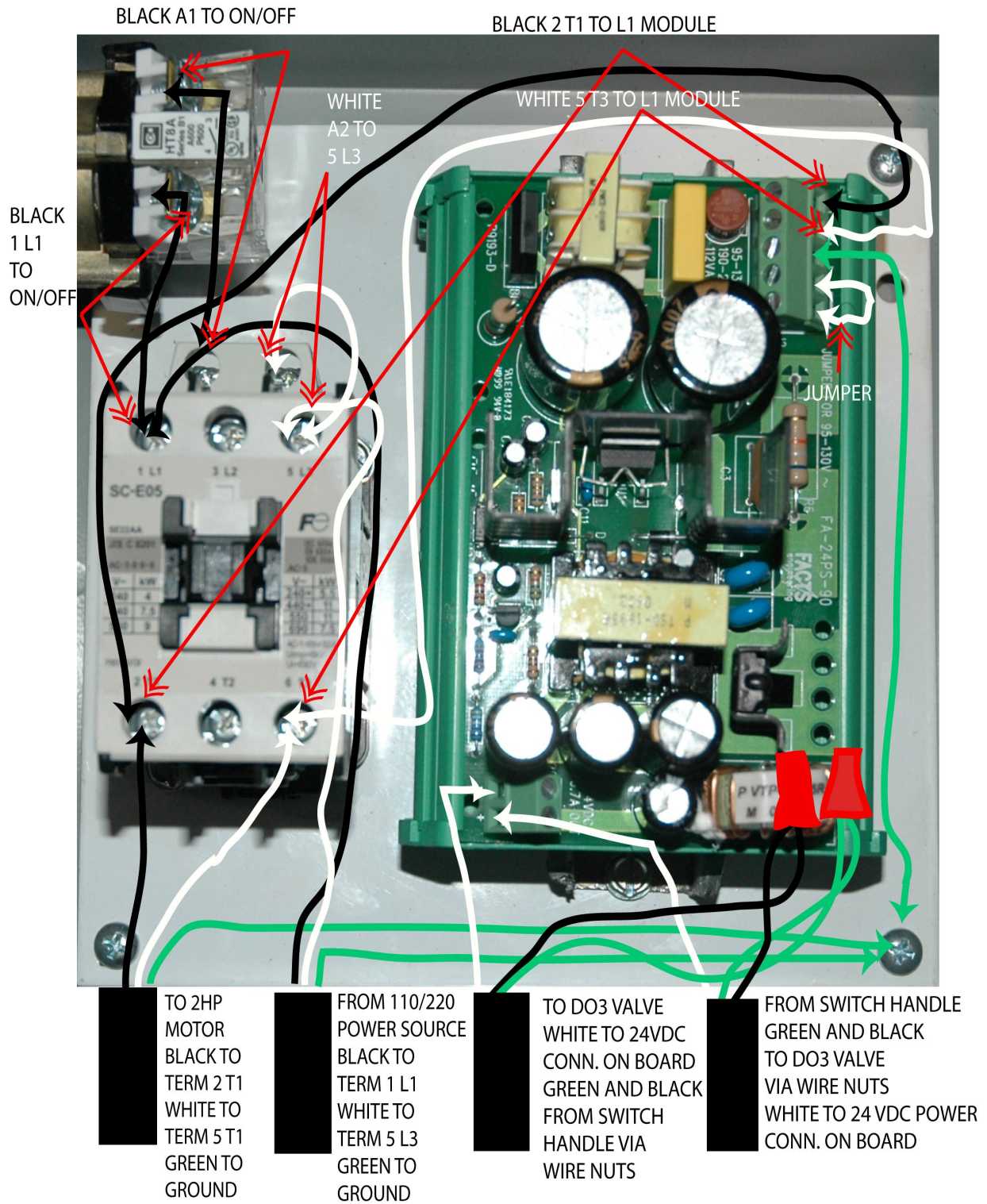
SEGURIDAD

- ALWAYS WEAR EYE PROTECTION
- AVOID LOOSE FITTING SHIRT SLEEVES
- WEAR PROTECTIVE GLOVES, THE CUT END OF PIPE WILL BE SHARP
- HYDRAULIC FLUID UNDER PRESSURE CAN CUT EXPOSED SKIN

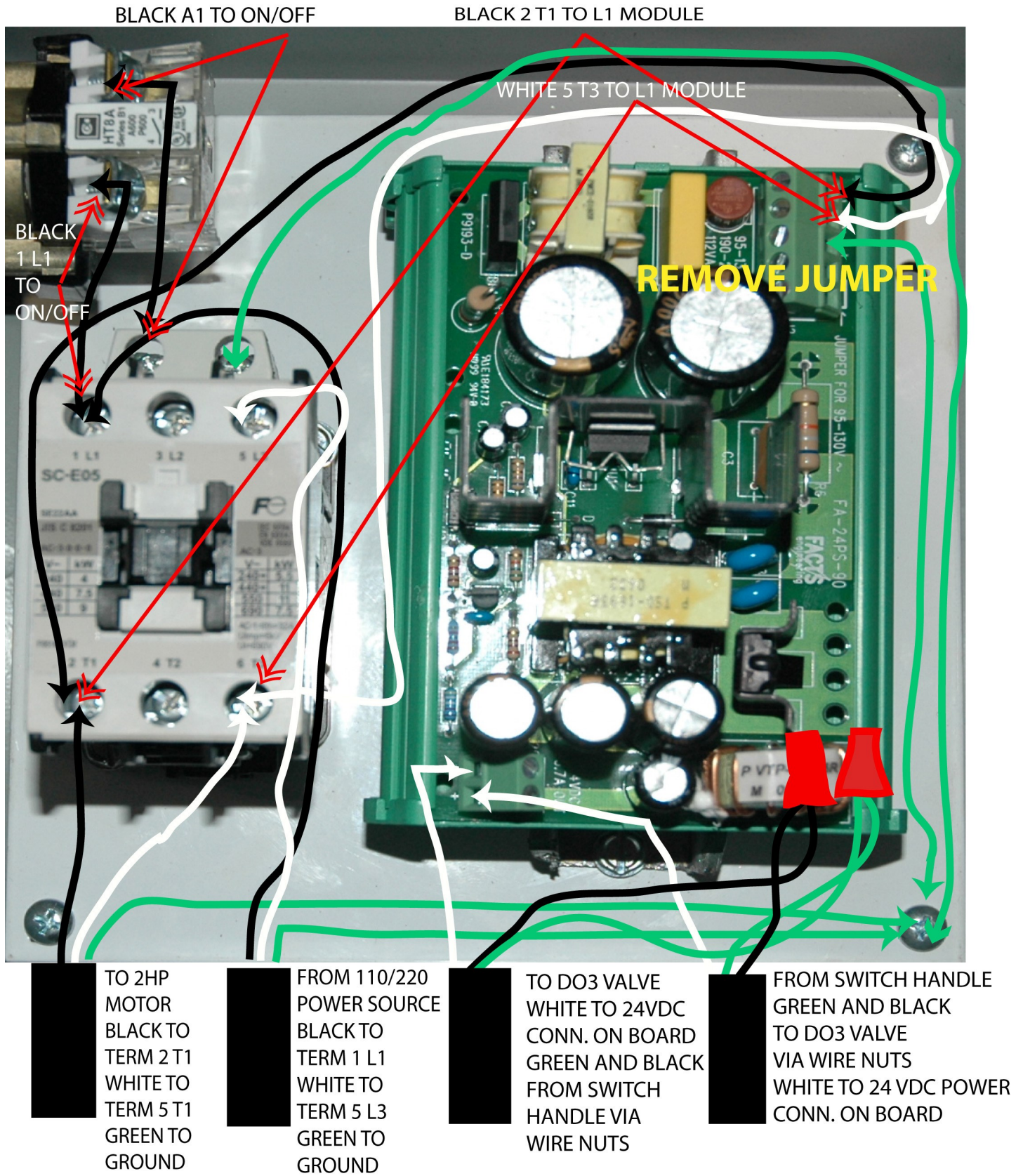
REPAIR ALL HOSE LEAKS IMMEDIATELY

- UNPLUG SHEAR WHILE DOING ANY AND ALL REPAIRS. USE CAUTION WHEN REPAIRING ELECTRICAL COMPONENTS IN ELECTRICAL PANEL

- **SIEMPRE USE PROTECCIÓN DE OJO**
- **EVITE LAS MANGAS FLOJAS DE LA CAMISA**
- **USE LOS GUANTES PROTECTORES, EL CORTE DE LA PIPA ESTARA AFILADO.**
- **EL LÍQUIDO HIDRÁULICO BAJO PRESIÓN PUEDE CORTAR LA PIEL EXPUESTA**
- **REPARE TODOS LOS ESCAPES DE LA MANGUERA INMEDIATAMENTE**
- **DESENCHUFE EL ESQUILEO (LA MAQUINA DE TIJERA) MIENTRAS QUE HACE CUALESQUIERA Y TODAS LAS REPARACIONES.**
- **TENGA CUIDADO AL REPARAR LOS COMPONENTES ELÉCTRICOS EN LA CAJA DE ELÉCTRICIDAD**

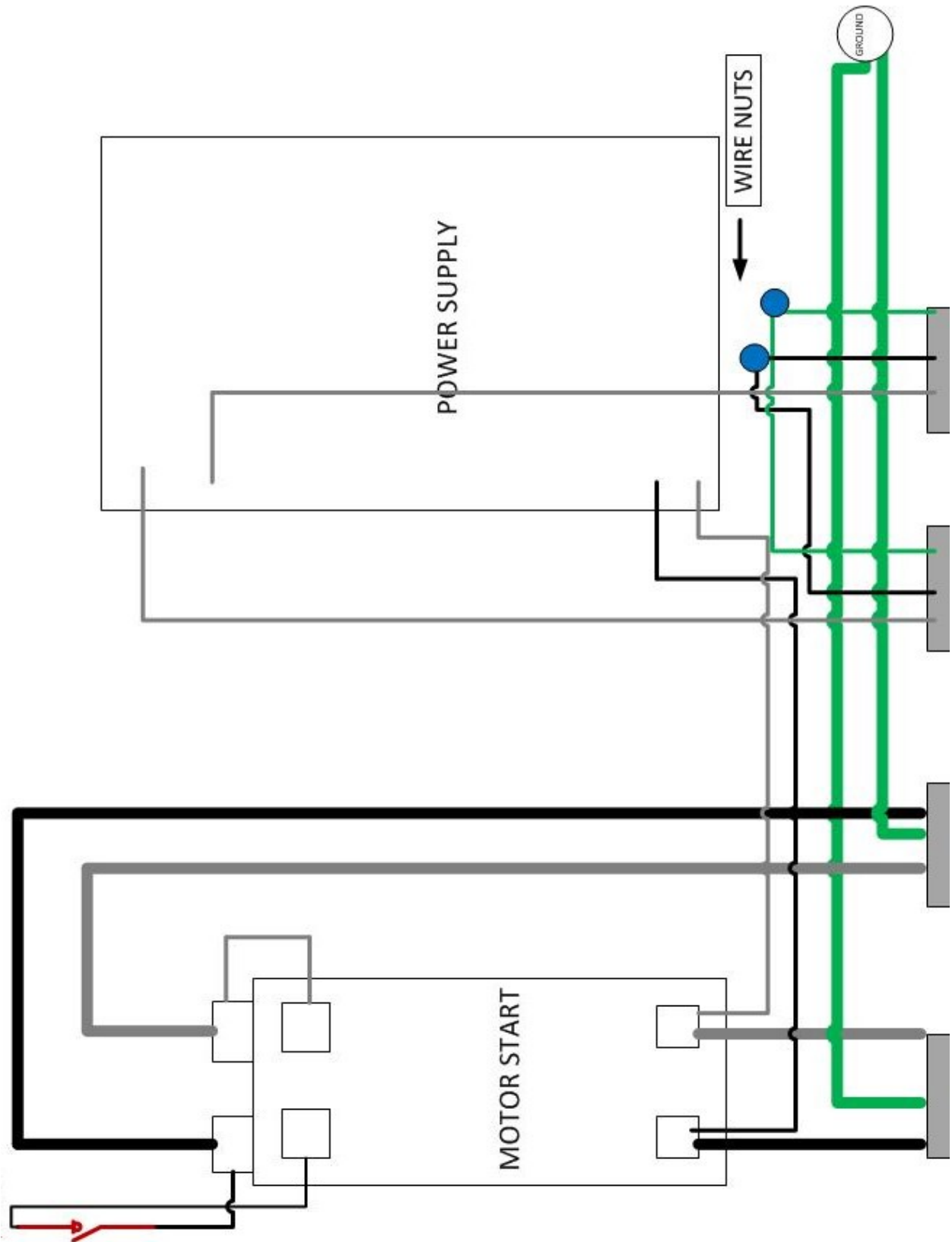


110 WIRE DIAGRAM W/ POWER SUPPLY MODULE



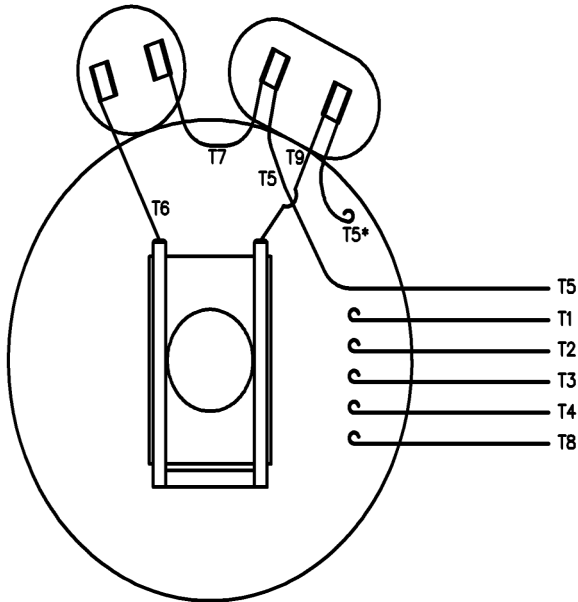
220 WIRE DIAGRAM W/ POWER SUPPLY MODULE

110 Volt with New 24 VDC Power Supply

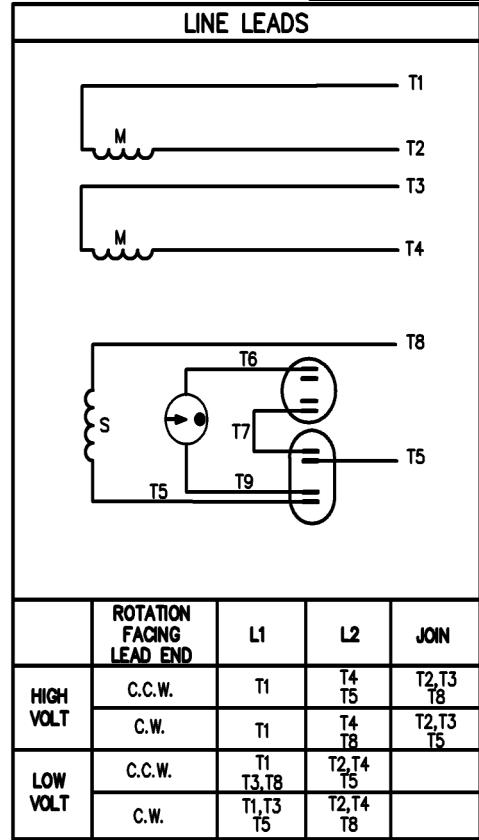


005054-01

VIEW FROM OUTSIDE OF MOTOR AT SWITCH END.






* THIS LEAD MAY BE WHITE



		TOLERANCES UNLESS SPECIFIED		LEESON ELECTRIC MOTORS GEARMOTORS AND DRIVES		DRAWN JRW 09/27/74			
		DEC.	INCHES			CHK	TEM		
		.X	±.1			APPD	10/11/74		
11	ALTERNATE T5 LEAD MARKING WAS RED	RLW	8/6/02	.XX	±.01		SCALE 1=1		
10	ADDED ALTERNATE T5 LEAD MARKING	RLW	6/5/02	KH	±.005		REF A-005053		
09	REDRAWN TO CAD	DBT	05/28/97	.XXXX	±.0005		FMF W-K8343		
NO.	REVISION	BY & DATE	CHK	ANG	±1/2'	FINISH	PREV		
THIS DRAWING IN DESIGN AND DETAIL IS OUR PROPERTY AND MUST NOT BE USED EXCEPT IN CONNECTION WITH OUR WORK. ALL RIGHTS OF DESIGN AND INVENTION ARE RESERVED. THIS IS AN ELECTRONICALLY GENERATED DOCUMENT - DO NOT SCALE THIS PRINT				RFP	CAD FILE	00505401	SIZE	DRAWING NO.	REV.
				DIST	BRF-NLV		A	005054-01	11

**LEESON 2HP INTERNAL WIRING
LOW VOLTAGE FOR 110 MODEL
HIGH VOLTAGE FOR 220 MODELS**

P/N 1633-BC

MADE EXCLUSIVELY FOR
SPX FLUID POWER

DUTY CONT HZ 60 RPM 3450 HP 2.0 PH 1 CODE G VOLT 115/230 FR 56C AMP 23.7/11.7 INS B MAX 40°C THERMAL PROTECTION NONE MFG P/N C63HWS-5180 DATE CODE MB08 C TYPE C UL E22922 CSA LR63596	HZ 60 RPM 3450 HP 2.0 VOLT 115/230 AMP 23.7/11.7 LOW VOLTAGE <table border="0"> <tr><td>ORG</td><td>—</td><td>—</td><td>—</td></tr> <tr><td>BLU</td><td>—</td><td>●</td><td>L1</td></tr> <tr><td>RED</td><td>—</td><td>●</td><td>L1</td></tr> <tr><td>WHT</td><td>—</td><td>—</td><td>—</td></tr> <tr><td>YEL</td><td>—</td><td>●</td><td>L2</td></tr> <tr><td>BLK</td><td>—</td><td>●</td><td>L2</td></tr> </table> HIGH VOLTAGE <table border="0"> <tr><td>BLU</td><td>—</td><td>—</td><td>L1</td></tr> <tr><td>ORG</td><td>—</td><td>●</td><td>L1</td></tr> <tr><td>RED</td><td>—</td><td>●</td><td>L1</td></tr> <tr><td>WHT</td><td>—</td><td>—</td><td>—</td></tr> <tr><td>YEL</td><td>—</td><td>●</td><td>L2</td></tr> <tr><td>BLK</td><td>—</td><td>●</td><td>L2</td></tr> </table> C 2P DUAL VOLT W/CAP & PROT ROTATION: CW DRIVE END REVERSIBLE	ORG	—	—	—	BLU	—	●	L1	RED	—	●	L1	WHT	—	—	—	YEL	—	●	L2	BLK	—	●	L2	BLU	—	—	L1	ORG	—	●	L1	RED	—	●	L1	WHT	—	—	—	YEL	—	●	L2	BLK	—	●	L2
ORG	—	—	—																																														
BLU	—	●	L1																																														
RED	—	●	L1																																														
WHT	—	—	—																																														
YEL	—	●	L2																																														
BLK	—	●	L2																																														
BLU	—	—	L1																																														
ORG	—	●	L1																																														
RED	—	●	L1																																														
WHT	—	—	—																																														
YEL	—	●	L2																																														
BLK	—	●	L2																																														

WARNING: MOTOR MUST BE GROUNDED IN ACCORDANCE WITH LOCAL AND NATIONAL ELECTRICAL CODES TO PREVENT SERIOUS ELECTRICAL SHOCKS.

Z41763933
 ASSEMBLED IN MEXICO

**WIRING DIAGRAM FOR THE EMERSON 110/220 MOTOR,
FOR 110:**

**LINE 1 TO ORANGE, BLUE, AND RED
LINE 2 TO WHITE, YELLOW, BLACK,
GREEN TO GROUND**

FOR 220:

**LINE 1 TO BLUE
LINE 2 TO YELLOW AND BLACK,
TIE ORANGE, RED AND WHITE TOGETHER
GREEN TO GROUND**

WARRANTY INFORMATION

Although the Supershear is thoroughly tested before it leaves our assembly plant, problems due happen beyond our control on those parts we purchase from outside vendors. Each of these vendors extends to us a limited liability for replacement of defective parts. We extend that limited liability onto you and will repair or replace, at our discretion any parts covered under the vendor warranties.

The list below covers parts for 1 year from delivery of the Supershear unit.

Parts Covered are as follows:

110/220 Electric Motors
All Electrical Components in Electric Panel
(Diode, Transformer, Starter Switch, On/Off Switch)
Hydraulic Pump Assembly (12 Volt and 110/220 units)
Hose Crimps if leak from a bad crimp
Honda Gas Motors and its parts
Manifold, Pressure Relief, DO-3 Valve
Gas Hydraulic Pump and Couplings
Small Cylinder
12 volt relays (not due to damage)
12 volt starter solenoid (not due to damage)

Parts NOT covered are as follows:

Blades
Mainframes
Hose leaks from other than crimps unless it's a defective hose.
Tires and Tubes
Damage due to misuse or act of God or on site accident beyond our control

Although the list is complete, you may have questions concerning what is and what is not covered. Please feel free to contact our sales staff at anytime to discuss these issues.

Company Office
Supershear LLC
6910 East Lobo Ave
Mesa AZ 85209

Plant
Supershear LLC
6056 East Baseline
#149
Mesa AZ 85206

Sales, Parts, Repair
(800) 999-8100

Web
<http://www.supershears.com>

Reprints of this manual available at:
<http://www.supershear.net>

